



Bioscrypt – Market Leader with the Most Deployed 3D Face Systems Worldwide

Provide employees with lightning-speed access to your offices and restricted areas using Bioscrypt's VisionAccess 3D Face Reader, EnrolCam and 3Di Admin Manager. Bioscrypt's face readers authenticate users in under a second and are optimized for high-traffic areas. Bioscrypt's 3D face readers combine:

SPEED – Real-time 3D imaging technology for instantaneous matches using a person's facial structure

SECURITY – Authenticate employees before they enter areas containing valuable assets

CONVENIENCE – Employees only have to pause on their way into work for hands-free access

PRECISION – Use up to 40,000 data points to make accurate matches

USABILITY – Accommodate a range of facial positions and poor lighting conditions

VisionAccess 3Di Admin Manager

Easily Manage 3D Face and Card Access

Bioscrypt's VisionAccess 3Di Admin Manager simplifies integrating 3D facial recognition into existing access control systems. Quickly enroll users and manage both 3D face and card access under a single system. 3Di Admin Manager uses a SQL database and can be easily synchronized with other access control databases. 3Di Admin Manager interfaces with the VisionAccess 3D EnrolCam to capture 3D face images and simplify template creation. Manage and distribute templates to VisionAccess 3D Face Readers for verification and identification.

Centralized Interface

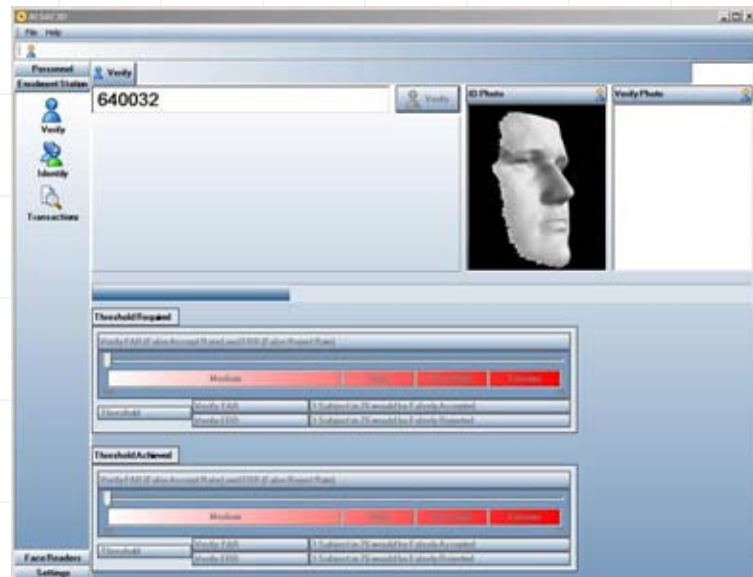
- Enroll and manage users for biometric and card access in a single system
- Interface with the VisionAccess 3D EnrolCam Station to capture 3D images for template creation
- Manage and distribute templates to VisionAccess 3D Face Readers

Monitor Status

- View real-time status of face readers

Easy Integration

- Several optional levels of integration with access control systems are available
- Intuitive, flexible interface that is configurable for each user's needs and duties



VISIONACCESS 3DI ADMIN MANAGER SPECIFICATIONS

SUPPORTED PLATFORMS	PC workstation Windows XP Professional™
MEMORY REQUIREMENTS	512 MB RAM (1 GB recommended)
PROCESSING REQUIREMENTS	3 GHz or faster Intel® Pentium® 4 processor / 1.5GHZ or faster Intel Dual Core Processor
DATABASE	SQL Server Express Database ships with application
STORAGE REQUIREMENTS	Installation requires a minimum 120 MB of hard disk space (not including space for template storage)
VIDEO CARD	Video card with dual-monitor and S-Video support (e.g. Nvidia GeForce 4400 or similar capabilities)
OTHER REQUIREMENTS	CD-ROM drive Ethernet card TCP/IP network environment



Bioscrypt is the enterprise
access division of L-1 Identity
Solutions

Visit us at www.bioscrypt.com
for case studies, datasheets and
white papers.

Americas
sales@bioscrypt.com
800 444 0496 • 905 940 7490

International
sales-international@bioscrypt.com
+41 22 849 1051

Offices
Canada • United States
Switzerland • United Kingdom

www.bioscrypt.com

bioscrypt[®]
An L-1 Identity Solutions Company