

## ALV-C-4300CP-3.6



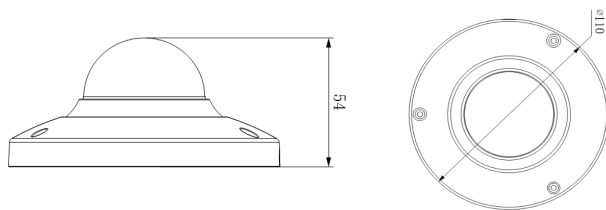
### Features

- 1/3" 3Megapixel progressive scan Aptina CMOS sensor
- H.264 & MJPEG dual-stream encoding
- Max 20fps@3M(2048× 1536), 25/30fps@1080P
- Day/Night(Electronic), 3DNR, AWB,AGC,BLC
- Multiple network monitoring:
  - Web viewer, CMS(DSS/PSS)
  - CMS(DSS/PSS)
  - DMSS
- 3.6mm fixed lens (2.8mm,6mm optional)
- Micro SD memory, IP66, IK10, PoE

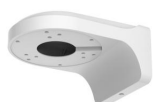
### Specifications

CAMERA	
Image Sensor	1/3" 3 Megapixel progressive scan CMOS sensor
Effective Pixels	2048(H)×1536(V)
Scanning System	Progressive
Electronic Shutter Speed	Auto/Manual 1/3(4)~1/10000
Min. Illumination	Color: 0.1Lux/F1.4
S/N Ratio	More than 50dB
Video Output	N/A
CAMERA FEATURES	
Max. IR LEDs Length	N/A
Day/Night	Auto(Electronic)/Color/B/W
Backlight Compensation	BLC / HLC / DWDR
White Balance	Auto/Manual
Gain Control	Auto/Manual
Noise Reduction	3D
Privacy Masking	Up to 4 areas
LENS	
Focal Length	3.6mm (2.8mm, 6mm optional)
Max Aperture	F1.8 (F2.0/F1.6)
Focus Control	Manual
Angle of View	H: 72.5° (90°/44°)
Lens Type	Fixed lens
Mount Type	Board-in Type
VIDEO	
Compression	H.264 / MJPEG
Resolution	3M(2048×1536)/1080P(1920×1080)/720P(1280× 720)/D1 (704× 576(704× 576/704× 480) / CIF(352× 288/352× 240)
Frame Rate	Main Stream 3M(1~20fps)/1080P/720P(1~25/30fps) Sub Stream D1/CIF(1 ~ 25/30fps)
Bit Rate	H.264: 32K ~ 8192Kbps
AUDIO	
Compression	G.711a / G.711u/PCM(-A)
Interface	Built-in Mic(-A)
NETWORK	
Ethernet	RJ-45 (100/1000Base-T)
Protocol	IPv4/IPv6, HTTP, HTTPS, SSL, TCP/IP, UDP, UPnP, ICMP, IGMP, SNMP, RTSP, RTP, SMTP, NTP, DHCP, DNS, PPPOE, DDNS, FTP, IP Filter, QoS, Bonjour
Compatibility	ONVIF, PSIA, CGI
Max. User Access	20 users
Smart Phone	iPhone, iPad, Android, Windows Phone
AUXILIARY INTERFACE	
Memory Slot	Micro SD, Max 64GB
RS485	N/A
Alarm	N/A
GENERAL	
Power Supply	DC12V, Max 3W
Working Environment	-30°C~+60°C , Less than 95%RH
Ingress Protection	IP66
Vandal Resistance	IK10
Dimensions	Φ110mm× 54mm, 0.25kg

### Dimension (unit:mm)



### Optional Parts



PFB200W



PFA131



PFA123

### Distributor

Design and specifications are subject to change for product improvements without prior notice.