

ALV-C-5421EP-Z



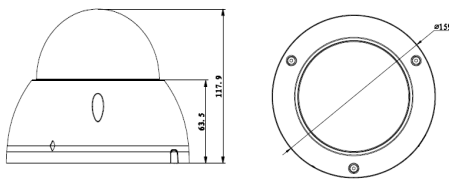
Features

- 1/3" 4Megapixel progressive scan CMOS
- H.264&MJPEG triple-stream encoding
- Max 20fps@4Mp(2560× 1440),25/30fps@3M(2304x1296)
- WDR(120dB), Day/Night(ICR), 3DNR, AWB, AGC, BLC
- Multiple network monitoring;
 - Web viewer
 - CMS(DSS/PSS)
 - DMSS
- 2.7mm ~12mm motorized lens
- Max. IR LEDs Length 50m
- IP67,IK10, PoE
- Micro SD card memory

Specifications

CAMERA			
Image Sensor	1/3" 4Megapixel progressive scan CMOS		
Effective Pixels	2688(H)×1520(V)		
Scanning System	Progressive		
Electronic Shutter Speed	Auto/Manual 1/3(4)~1/10000s		
Min. Illumination	0.01Lux/F1.4(Color); 0Lux/F1.4(IR on)		
S/N Ratio	More than 50dB		
Video Output	1 port		
CAMERA FEATURES			
Max. IR LEDs Length	50m		
Day/Night	Auto(ICR) / Color / B/W		
Backlight Compensation	BLC / HLC / WDR (120dB)		
White Balance	Auto/Manual		
Gain Control	Auto/Manual		
Noise Reduction	3D		
Privacy Masking	Up to 4 areas		
LENS			
Focal Length	2.7 -12mm	Max Aperture	F1.4
Focus Control	Motorized	Angle of View	H: 100°~33°
Lens Type	Manual/ Auto Iris(DC)	Mount Type	Board-in Type
VIDEO			
Compression	H.264/H.264H/H.264B/MJPEG		
Resolution	4M(2560x1440)/3M(2304x1296)/1080P(1920x1080)/1.3M(1280× 960)/720P(1280× 720)/D1(704× 576/704× 480)/CIF(352× 288/352× 240)		
Frame Rate	Main Stream	4M(1~20fps)/3M(1 ~ 25/30fps)	
	Sub Stream	D1/CIF(1 ~ 25/30fps)	
	Third Stream	720P(1~5/8fps)* /720P(1~18/2fps)**	
Bit Rate	H.264: 32K ~ 10Mbps		
Corridor mode	Support		
AUDIO			
Compression	G.711a / G.711u / AAC		
Interface	1/1 channel In/Out		
INTELLIGENT FUNCTION (when used in conjunction with Alius Vision NVR's)			
Smart detection	Tripwire, intrusion, scene change, face detect		
NETWORK			
Ethernet	RJ-45 (10/100Base-T)		
Protocol	IPv4/IPv6, HTTP, HTTPS, SSL, TCP/IP, UDP, UPnP, ICMP, IGMP, SNMP, RTSP, RTP, SMTP, NTP, DHCP, DNS, PPPoE, DDNS, FTP, IP Filter, QoS, Bonjour		
Compatibility	ONVIF, PSIA, CGI		
Max. User Access	20 users		
Smart Phone	iPhone, iPad, Android, Windows Phone		
AUXILIARY INTERFACE			
Memory Slot	Micro SD, Max 128GB		
RS485	N/A		
Alarm	1/1 channel In/Out		
GENERAL			
Power Supply	DC12V(AC24V optional), PoE(802.3af), Max 10W (with IR on motorized lens working)		
Working Environment	-40°C~+60°C , Less than 95%RH		
Ingress Protection	IP67		
Vandal Resistance	IK10		
Dimensions	Φ159mm×117.9mm, 0.8kg		

Dimension (unit:mm)



Distributor



P: 07 3451 9300 | P: 02 9450 6500 | P: 03 9200 6700 | P: 08 8843 7062
F: 07 3806 4794 | F: 02 9450 6586 | F: 03 9645 1422 | F: 08 8125 6559

www.iscs.com.au

*WDR on **WDR off
(* Design and specifications are subject to change for product improvements without prior notice.