

## L-1 Fingerprint Reader Solutions

# V-Station™ 4G

## 4G – Biometric Performance Redefined with a Smart Security Appliance

### Advanced Features

- Largest Template Capacity in the Industry (100,000 in 1:1; 10,000 in 1:N or up to 50,000 in 1:N with bins)
- Single-, Two- or Three-factor Authentication; Optional Integrated Card Readers (Prox, iClass, or MIFARE / DESFire)
- Range of 500 dpi Sensor Options
- Field Replaceable Sensors
- Backwards Compatible
- Remote Device Management
- Full IP and POE Enabled (Optional Wireless LAN)
- Powerful Administration Software
- Flush Mounted
- “Quick-Tilt” Access for Easy Maintenance
- Time & Attendance Ready
- Standalone Door Access Control (SDAC) Capabilities

**L-1 Identity Solutions** delivers the next generation of the Bioscrypt V-Station fingerprint reader - built on our new 4G technology platform that transforms an access control device into a smart security appliance through improved performance, usability and scalability.

The V-Station 4G is equipped with state-of-the-art biometric and multi-factor authentication, powerful on-board processing for rapid and accurate authentication, sophisticated storage, extensible memory, 802.11 wireless connectivity, and full-sized color LCD displays to keep employees and visitors informed with custom messaging.

The new V-Station 4G incorporates innovative and powerful capabilities and is ready for future expansion as the security industry continues to evolve. Invest in the most advanced biometric device today that is future-ready for tomorrow’s organizational growth and security industry advancements.

**UNMATCHED POWER** - take biometric access control to the next level of truly connected and intelligent security appliances

**EFFORTLESS TO USE** - intuitive interface and controls for personnel and administrators

**DESIGNED FOR FLEXIBILITY AND SCALE** - address different deployment scenarios, changing business requirements, and future growth

**INNOVATIONS THAT LOWER COST OF OWNERSHIP** - modular design and easy to maintain



### Model Configurations:

#### V-Station 4G (Base)

- Finger-only
- PIN + Finger Authentication

#### V- Station 4G (Prox)

Integrated Prox Card Reader

- Card + Finger
- PIN + Finger
- Finger-only

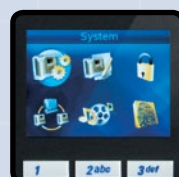
#### V-Station 4G (Smart)

Integrated Smart Card Reader

- Finger + Contactless Smart Cards



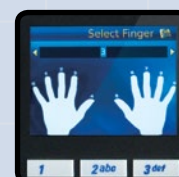
Range of 500 dpi Sensor Options



Easy to Navigate LCD Screen



Flush Mounted



User Configurable Device Settings



Quick Tilt Access for Easy Maintenance

# Biometric Performance Redefined

The V-Station 4G unleashes a combination of power, usability and design to address secure access control requirements of any size, anywhere around the world.

## Lower Your Total Cost of Ownership

Over the lifespan of the V-Station 4G customers can lower the total cost of ownership through:

- More efficient installation and deployment
- Innovations that streamline device maintenance
- Increased hardware reliability
- Benefit from administration efficiency
- Backwards compatibility

## Maximize Your Investment

The V-Station 4G is backwards compatible with the Bioscrypt Veri-Series line of fingerprint readers and will work in a mixed device environment.

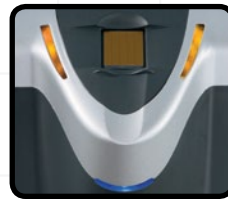
## Prepare for Future Demands with a Scalable Platform

V-Station 4G contains superior biometric capabilities for deployment flexibility and scale. A variety of models are available to address a wide range of deployment scenarios. Quick throughput with 6,000 templates searched per second ensures employees gain secure access fast.

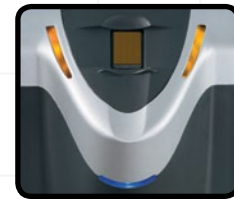
- On-board storage capacity of 100,000 templates for 1:1 verification to accommodate large enterprise installations
- Store 10,000 templates for 1:N identification to eliminate the need for cards or PINs
- Or store 50,000\* templates for 1:N identification to accommodate large workforces
- 500 dpi Optical and Capacitive sensor options to meet varying project requirements



Optical Sensor



TCS1 Capacitive Sensor



TCS2 Capacitive Sensor

## Meet Challenging Security Requirements

The V-Station 4G provides strong security with multi-factor authentication combining fingerprint, cards and PINs.

- Wide range of configurable options for single-, two- or three-factor authentication – all in a self contained device
- Built-in door relay and controls to reduce cost and complexity for single door access control
- Duress finger option for added employee safety and security
- Tamper detection built in for added security and peace of mind
- Intuitive and clear indication of access status displayed with LED's and the LCD screen



Accepted Screen with Green LED Indicator



Rejected Screen with Red LED Indicator

## Leverage Existing Infrastructure

The V-Station 4G is purpose built to work with security industry technologies and is backwards compatible to ease migration costs and effort.

- Supports all Bioscrypt legacy template formats to eliminate need for existing customers re-enrollment
- Integrated with leading access control panels to ensure devices work with existing infrastructure
- Works with existing BioSDK integrations with PAC partner applications to eliminate need for time-consuming integration efforts

## Reduce Maintenance Costs

The V-Station 4G is a communication-ready connected smart device, containing new installation and maintenance capabilities to help organizations save time and drive down the cost of ownership.

- Full Ethernet, POE, RS485 with optional Wireless LAN
- Flush mount with "Quick-Tilt" design for easy access
- Innovative field replaceable sensor for quick maintenance
- Remote device management capability



Quick Tilt Access



Field Replaceable Sensor

\*Enabled with binning

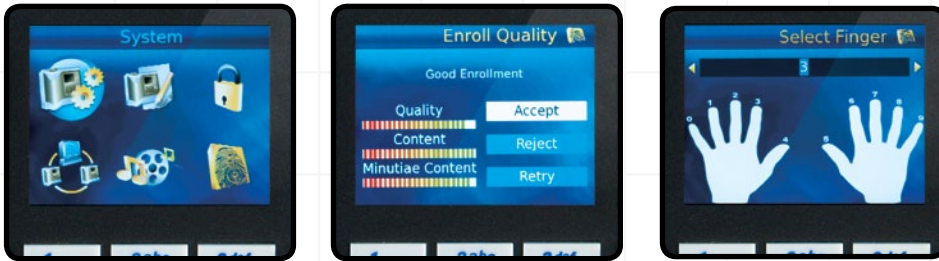
## Choose How You Want to Manage the System

With two options for administration – on device or through SecureAdmin software, administrators have complete flexibility to manage devices and templates.

### Standalone Device Administration –

Powerful on device intuitive interface allows for complete control right at the device.

- Easy to navigate full color LCD screen
- Intuitive on-device enrollment
- Manage all device settings, controls and templates right at the device.

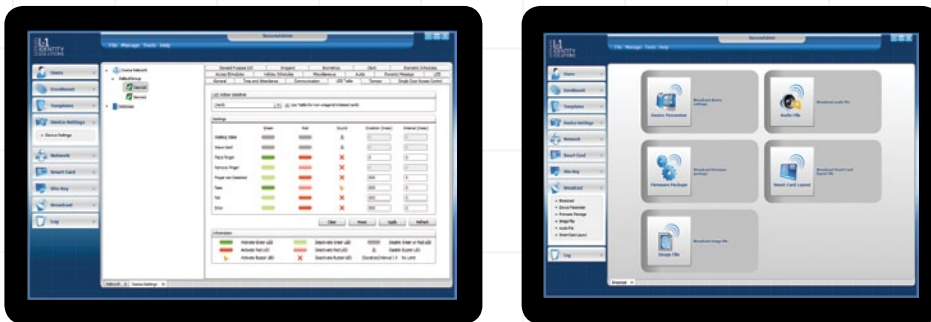


Administration through Remote Device Management or On-Device

### SecureAdmin™ Device Management –

Use SecureAdmin, from a desktop and through IP connectivity. SecureAdmin is powerful enterprise management software that makes administration of networked V-Station 4G devices quick and simple.

- Client-server architecture (centralized data storage and distributed administration)
- Unlimited device and user groups make it easy to manage large installs
- User configurable device settings to adapt devices to specific needs
- Broadcast all or user selected device settings makes initial set up and global changes quick and painless



Flexible Enrollment With On-Device Enrollment or IP Enabled through SecureAdmin

## Increase Workforce Management Efficiency (T&A Ready)

V-Station 4G is time and attendance ready with integrated features to address workforce management.

- Dynamic messaging option for real-time workforce notifications and company communications
- Time & Attendance programmable function keys placed next to corresponding text on devices LCD display
- One Million transaction log storage on a device
- Built-in door relay, access schedules, and door control settings



Transaction Log files

Dynamic Messaging option

## Recommended Deployment Scenarios

### Single door access control

- For secure access through a single access point.

### Stand-alone access control device

- Streamlined deployments where stand-alone devices are required for on-device enrollment and administration, and provide onboard relay.

### Graduated threat levels for access control

- Organizations that require flexibility for graduated multi-factor authentication levels to address varying security threat levels

### Multi-tenant access control

- Buildings that offer secure access control to all businesses in the building

### Large enterprise access control

- Enterprise capable to integrate into large scale access control environments
- Organizations that require communication-ready connected devices for access control administration and maintenance across widely geographically located premises and access points

### Time and Attendance

- Capturing time and attendance for workforce management systems and functionalities

# V-Station™ 4G Ordering Information



BIOSCRYPT  
ENTERPRISE ACCESS SOLUTIONS

			Product Codes Including Optional Features		
Base Models	Sensor	Standard Product Code	Wireless	1:50,000 Matching	Wireless & 50k Matching
V-Station 4G (Base)	Optical	4GSTS	4GSTSW	4GSTSM	4GSTSWM
V-Station 4G (Base)	TCS1	4GSTU1	4GSTU1W	4GSTU1M	4GSTU1WM
V-Station 4G (Base)	TCS2	4GSTU2	4GSTU2W	4GSTU2M	4GSTU2WM
Prox Models	Sensor	Standard Product Code	Wireless	1:50,000 Matching	Wireless & 50k Matching
V-Station 4G (Prox)	Optical	4GSTSP	4GSTSPW	4GSTSPM	4GSTSPWM
V-Station 4G (Prox)	TCS1	4GSTU1P	4GSTU1PW	4GSTU1PM	4GSTU1PWM
V-Station 4G (Prox)	TCS2	4GSTU2P	4GSTU2PW	4GSTU2PM	4GSTU2PWM
iClass Models	Sensor	Standard Product Code	Wireless	1:50,000 Matching	Wireless & 50k Matching
V-Station 4G (iClass)	Optical	4GSTSH	4GSTSHW	N/A	N/A
V-Station 4G (iClass)	TCS1	4GSTU1H	4GSTU1HW	N/A	N/A
V-Station 4G (iClass)	TCS2	4GSTU2H	4GSTU2HW	N/A	N/A
MIFARE/DESFire Models	Sensor	Standard Product Code	Wireless	1:50,000 Matching	Wireless & 50k Matching
V-Station 4G (MIFARE/DESFire)	Optical	4GSTSG	4GSTSGW	N/A	N/A
V-Station 4G (MIFARE/DESFire)	TCS1	4GSTU1G	4GSTU1GW	N/A	N/A
V-Station 4G (MIFARE/DESFire)	TCS2	4GSTU2G	4GSTU2GW	N/A	N/A

All units include wall mounting kit, SecureAdmin™ software and USB administrator cable.

Desktop stand kit available separately. Kit includes plastic demo stand, 120V standard North American power cord and mounting screws.

SecureSDK™ sold separately.

# V-Station™ 4G Hardware Features Map

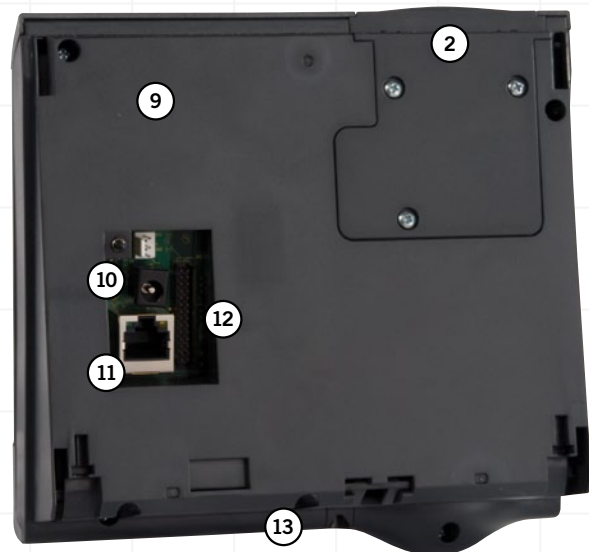
## Front

- 1 Configurable LEDs Colors based on event, time, etc. (Visual cues for successful/unsuccessful verification, access granted/denied, place finger and place card)
- 2 Field Replaceable Fingerprint Sensor
- 3 Blue LED Power Indicator
- 4 Card Reader (Prox, iClass, or MIFARE/DESfire)
- 5 2.5" QVGA Color LCD with customizable wallpaper, slideshows and audio
- 6 Four Programmable Function Keys (with function names beside keys on menu display)
- 7 Blue LED Backlit Keypad
- 8 Multi Directional Menu Navigation Keys



## Back

- 9 Wireless LAN (Internal)
- 10 Power for Device
- 11 Power over Ethernet (POE)
- 12 Wiegand  
 3 General Purpose Inputs  
 3 General Purpose Outputs
- 13 USB Memory Port (Bottom)



# V-Station™ 4G

## Product Specifications



BIOSCRYPT  
ENTERPRISE ACCESS SOLUTIONS

<b>Dimensions</b>	Length 6.27" (159 mm) Width 6.47" (165 mm) Depth 3.24" (82 mm)
<b>Communications</b>	<b>Networking Options:</b> LAN, WAN, RS485, Optional Wireless LAN <b>PC Connection:</b> USB, RS232
<b>External Media</b>	USB memory
<b>Input / Outputs</b>	Wiegand (Customizable format up to 254 bits) 3 General Purpose Inputs 3 General Purpose Outputs (Extendable to 6 outputs)
<b>Fingerprint Sensor Options</b>	Secugen Optical, UPEK TCS1, UPEK TCS2 (all 500 dpi)
<b>Internal Card Reader Options</b>	Prox, iClass, MIFARE/DESFire
<b>Template Storage Capacity</b>	100,000 per unit for 1:1 verification 10,000 per unit in 1:N identification (Standard) 50,000* per unit in 1:N identification (Optional)
<b>Transaction Log Capacity</b>	1 Million transaction logs stored on device
<b>Authentication Modes</b> (Configurable to address changing threat levels)	<p><b>V-Station 4G (Base)</b></p> <ul style="list-style-type: none"> <li>• Finger Only</li> <li>• Finger +PIN</li> <li>• PIN Only</li> <li>• Card or PIN + Finger (with an external reader)</li> </ul> <p><b>V-Station 4G (Prox)</b></p> <ul style="list-style-type: none"> <li>• Prox Card + Finger</li> <li>• Prox Card Only</li> <li>• Finger Only</li> <li>• Finger + PIN</li> <li>• PIN Only</li> <li>• Prox Card + PIN + Finger</li> </ul> <p><b>V-Station 4G (Smart Card)</b></p> <ul style="list-style-type: none"> <li>• Smart Card + Finger</li> <li>• Smart Card + Finger + PIN</li> </ul>
<b>Template Support</b>	Bioscrypt Pattern and Minutia
<b>Power over Ethernet (POE)</b>	Standard
<b>Display</b>	2.5" QVGA Color LCD
<b>Keypad</b>	3x4 Backlit Keypad (Blue) 4 Programmable Function Keys for Time & Attendance Multi Directional Navigation Keys
<b>Voltage</b>	12 - 24V DC
<b>Current Draw</b>	500 mA, 0.5 amps @ 12 VDC
<b>Power Indicator</b>	LED indicator (Blue)
<b>Integrated Door Relay</b>	Deadbolt, electromagnetic (EM) lock, door strike, automatic door
<b>Mounting</b>	Flush mount with quick-tilt top design & field replaceable sensors for easy maintenance
<b>Operating Temperature</b>	32° - 140°F (0° - 60°C)
<b>Approvals and Certifications</b>	FCC, CE , R&TTE, RoHS
<b>Administration Software Options</b>	Works with SecureAdmin™ software or SecureSDK™

\*Enabled with binning

### The L-1 Enterprise Access Division

#### Americas

Sales-EnterpriseAccess@L1ID.com  
800 444 0496 • 905 940 7490

#### International

Sales-Intl-EnterpriseAccess@L1ID.com  
+41 22 849 1051

#### Offices

Canada • United States • Switzerland

[www.L1ID.com/EnterpriseAccess](http://www.L1ID.com/EnterpriseAccess)

Copyright © 2009, L-1 Identity Solutions, Inc.  
All rights reserved. The trademarks identified herein are the trademarks or registered trademarks of L-1 Identity Solutions, Inc. or other third party.